

## TECHNICAL DATA SHEET

## H400 E – TRACTION HOIST

### GENERAL SPECIFICATION

Maximum lifting capacity .....	400 kg
Lifting / lowering speed.....	8.5 m/min
Hoist weight (without safety brake).....	42 kg
Wire rope diameter.....	ø8 mm (Nom.)
Temperature range.....	-20 °C ★ 50 °C

### TRACTION SHEAVE ASSY

Drum / wire ratio .....	25 : 1
Disc material.....	GGG 60
Hardness .....	53 HRC
Number of springs .....	16
Pressure per springs .....	160 kg
Wire pressure angle .....	270 °
Coefficient of friction.....	0.09
Pressure of wire rope .....	52 kg/cm <sup>2</sup>

### ELECTROMOTOR

kW .....	0.55 kW
Type .....	A-Synchronous
Enclosure .....	IP 54
Voltage .....	220 / 240 V - single phase - 50 Hz
Run current.....	4 A
Run speed .....	1400 RPM
Thermal protector .....	105 °
Primary brake .....	El.-Mech. 8 Nm + Capac. braking

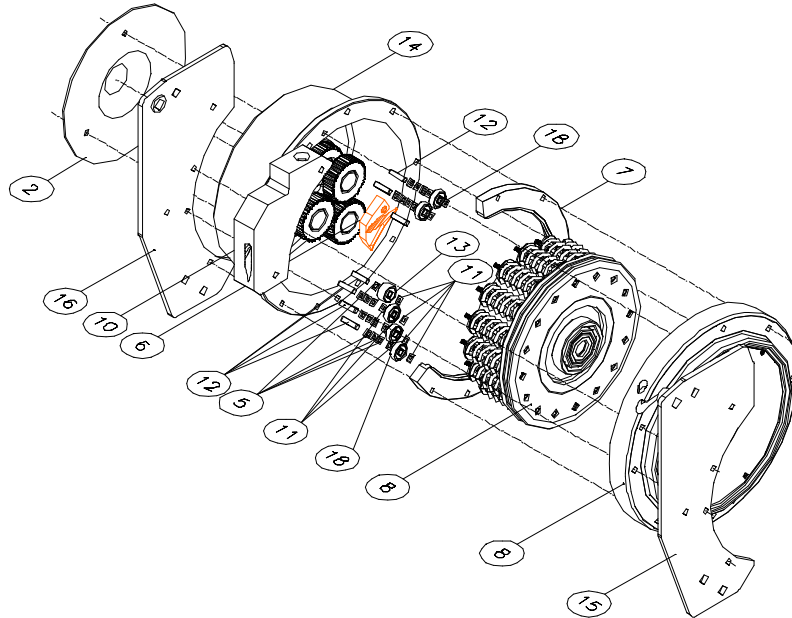
### GEARBOX ASSY

Type .....	2 stage planetary
Overall gear ratio.....	109.25
Gearing module .....	1.25
Nominal torque .....	391 Nm
Efficiency .....	96 %

## H 400 E ( WIRE ROPE JAM)

### PROCEDURE TO TAKE OUT STEEL WIRE ROPE, WHEN JAMMED INTO THE HOIST.

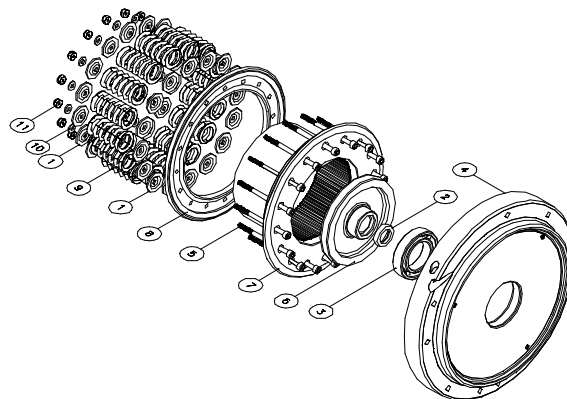
- 1) Disconnect elec. motor/ power pack by means of 3 bolts M 8 x 25
- 2) Turn Gearbox upside down and drain the oil via the motorhole.
- 3) Disconnect mounting straps (pos. 15+16) with bolts M 8 x 70 and M 12 x 70



- 4) Try to release cable guiding outer-side (pos. N°10)
  - a) If it is possible, probably steel wire rope can be pulled out already.
  - b) If not possible : disconnect the traction sheave assy cover pos. (8) with M8x45 (5 pcs)

Lift out the traction sheave-assembly by means of 2 screw drivers at each side of circumference at the same time !

If this does not work well, knock with plastic hammer on bearing P/N BAA0600802



pos. (3) to release traction sheave assy.

5) Release all nuts pos. (11) - M6 - 16 pcs. then sheave will open - steel wire rope can be released.

6) Check everything for eventual damage and clean.

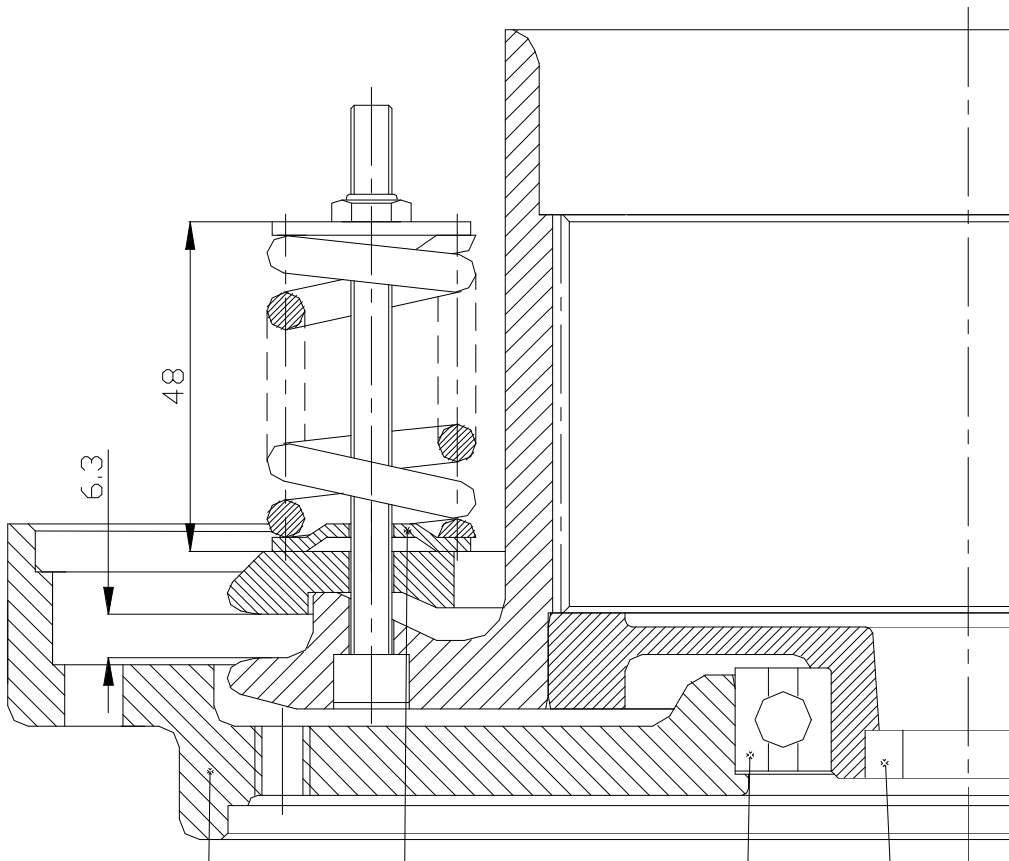
Following parts could be damaged :

- Guiding ring P/N H4000103
- Cable guiding outer side P/N H4000104
- Refill oil TIVELA - SD/0,3 liters P/N 12009508

P.S.

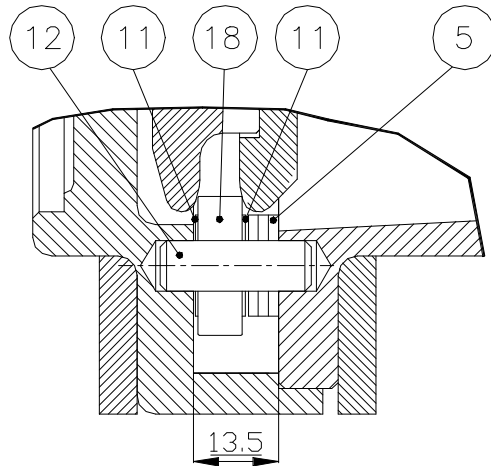
a) Follow the instructions from above in opposite order to reassemble the hoist.

b) Spring package has to be tightened up when reassembling to 48 mm!

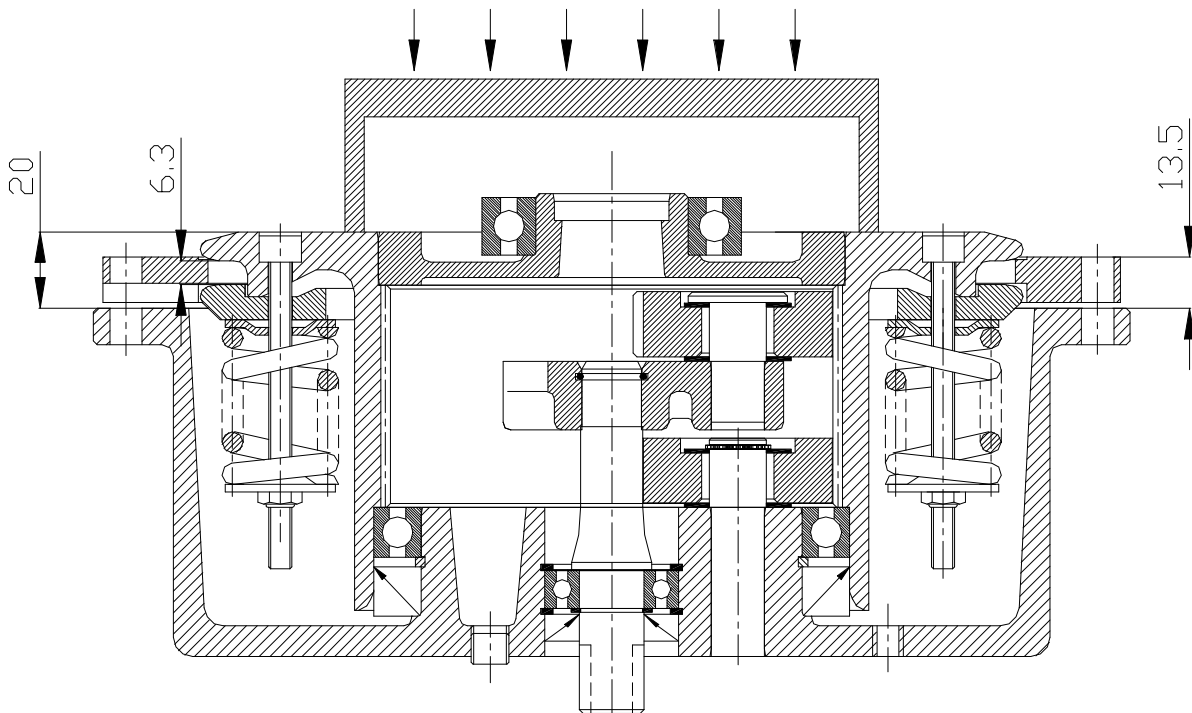


Distance between 2 Spring guides pos. (1) PN H4000305 is 44mm.

This is critical for sufficient pressure and traction.



POSITION OF ROLLER IN BETWEEN GROOVE AND WASHERS



PRESS THE DRIVE DISC ASSY INTO HOUSING AS SHOWN  
DO NOT PRESS ONTO THE BEARING OR BEARING COVER

**Important: Test the hoist with 400 kg. + 25% overload = 500 kg Dynamic !**